



## COMMUNITY COUNCIL LIAISON COMMITTEE SUB-COMMITTEE - 20TH MAY 2009

**SUBJECT: EXCLUSION DATA**

**REPORT BY: DIRECTOR OF EDUCATION AND LEISURE**

---

### **1. PURPOSE OF REPORT**

- 1.1 The report will provide statistical and comparative information for exclusions, both fixed-term and permanent over a six year period in primary and secondary schools and other educational settings within the Caerphilly Borough.
- 1.2 This report includes information supplied by the Welsh Assembly Government via First Release, an annual statistical report.
- 1.3 Comparative information on exclusion from primary schools is not available as this is not reported by the Welsh Assembly Government.

### **2. SUMMARY**

- 2.1 The Authority has demonstrated a commitment to reducing exclusions in all schools and educational settings. Strategies are in place to promote the early identification of social, emotional and behavioural needs. The Authority demonstrates a commitment to early intervention and prevention by providing effective training, advice and support in relation to intervention strategies.
- 2.2 The use of both managed moves and a very good range of specialist provision and alternative educational settings has helped to reduce the rate of exclusions.
- 2.3 Rates of permanent exclusions have reduced significantly over a 6 year period at both primary and secondary.
- 2.4 The total number of permanent exclusions in the Authority has reduced from 55 in 2002/03 to 23 in 2007/08.
- 2.5 The total number of all fixed term exclusions has also decreased from 1365 in 2006/07 to 1054 in 2007/08.

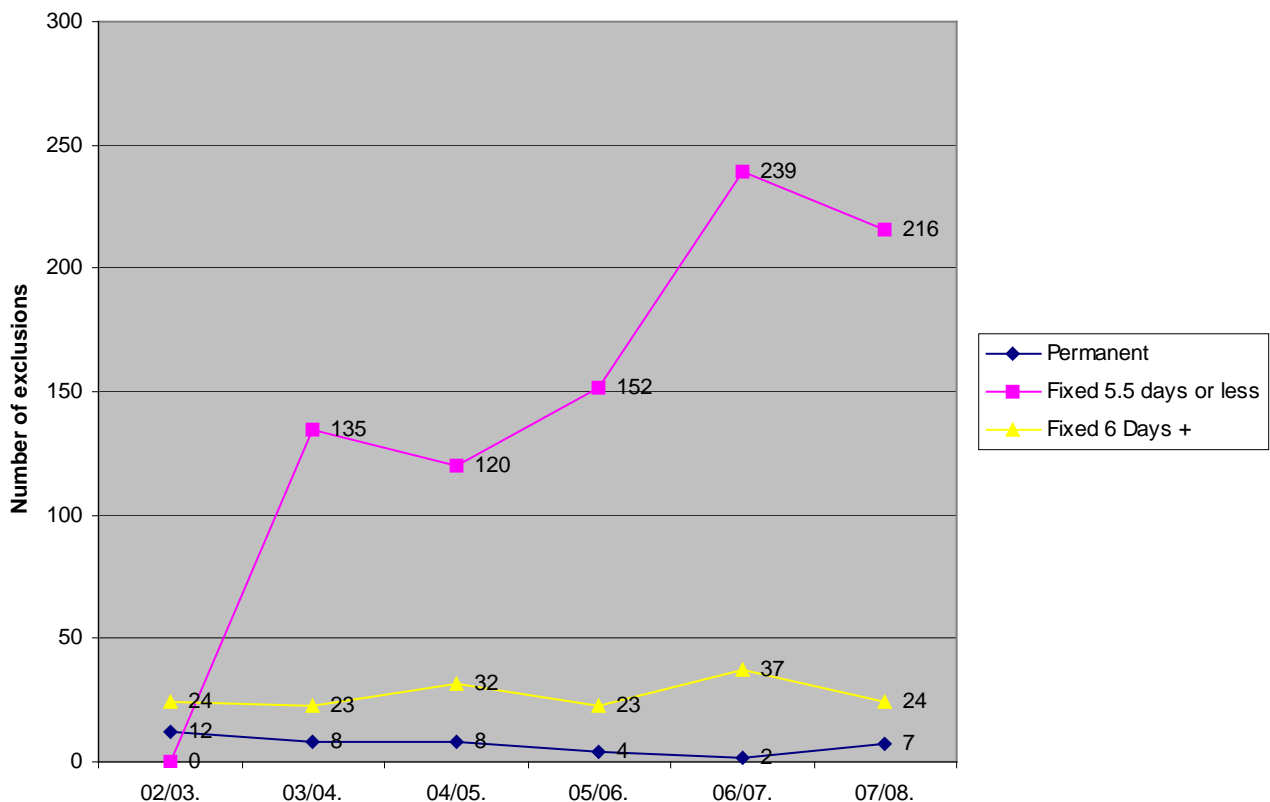
### **3. LINKS TO STRATEGY**

- 3.1 Reducing permanent and fixed-term exclusion remains a key issue within the Learning, Education and Inclusion Service Improvement Plan and links to the Welsh Assembly Government aim to reduce exclusion and disaffection of pupils.

## 4. THE REPORT

### Primary

- 4.1 Figure 1 shows that since 2002/03 there has been an overall downward trend in permanent exclusions at primary, from 12 in 2002/03, to 7 in 2007/08. Notably, the best performance was achieved in 2006/07 when there were 2 permanent exclusions. The 2007/08 figure yields a rate of 0.4 per 1000 pupils compared to the national average of 0.1 per 1000.
- 4.2 Figure 1 also illustrates the fact that there has been a decrease in both the number of fixed term exclusions of up to 5.5 days in addition to 6 and over.
- 4.3 The number of fixed term exclusions at primary of 6 plus days has reduced within the Authority for the first time in 4 years with a decrease to 24 in 2007/08 in comparison to 37 during the previous year.

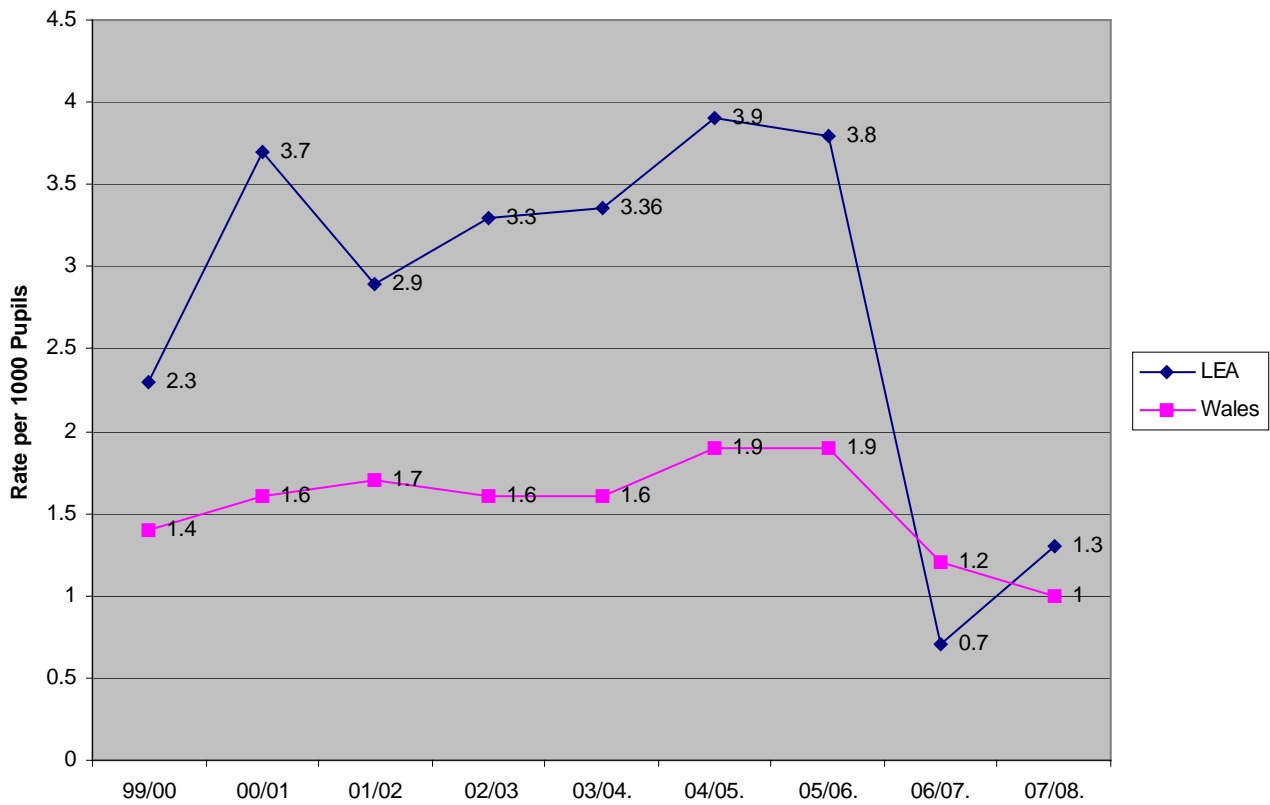


**Figure 1: Number of Exclusions from Primary Schools in Caerphilly County Borough Council Area**

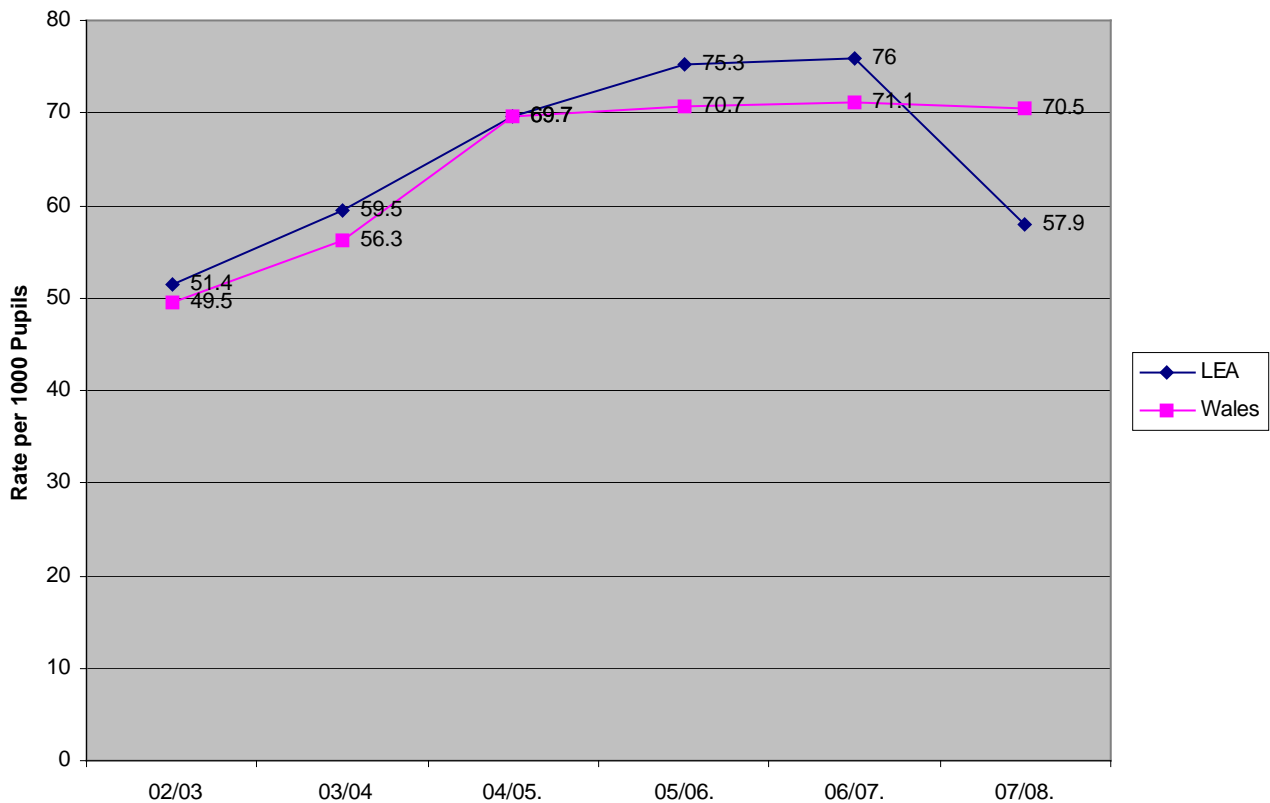
### Secondary

- Figure 2 shows that at secondary Caerphilly, for the first time, has gone below the All Wales average in 2006/07, in relation to permanent exclusions and that improvement has been sustained, albeit that the All Wales average was exceeded by 0.3 per 1000 pupils in 2007/08. There has been a reduction in permanent exclusions from 43 in 2002/03 to 16 in 2007/08.
- 4.4 Figure 3 shows that the Authority has significantly improved its position within Wales in relation to fixed term exclusions up to 5.5 days, moving from 17th with 962 exclusions in 2005/06, to 8th with 710 exclusions in 2007/08. The Authority's rate of 57.9 fixed term exclusions per 1000 pupils betters the national average of 70.5 per 1000 pupils.

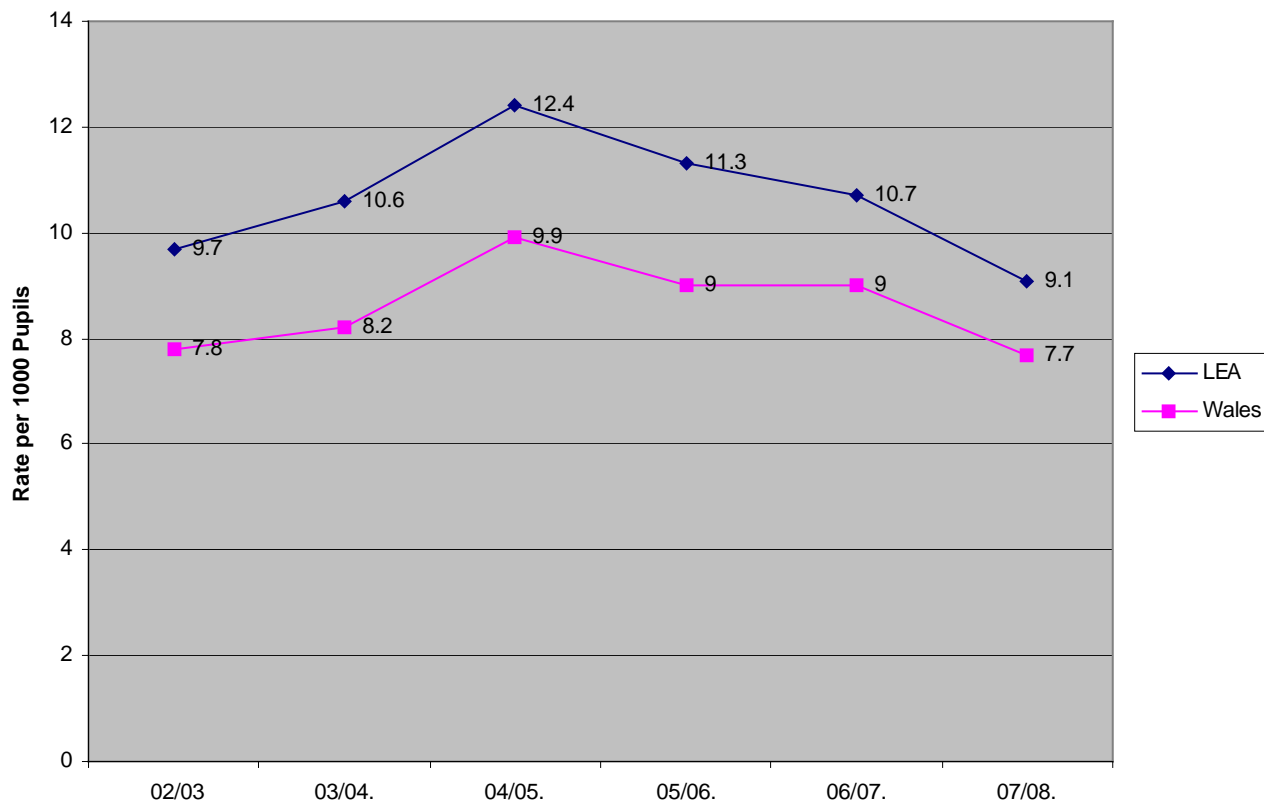
4.5 The Authority's performance in relation to fixed term exclusions over 6 days is illustrated in Figure 4. A reduction from 130 in 2006/07 to 104 in 2007/08 was achieved.



**Figure 2. Permanent Exclusion in Secondary Schools**



**Figure 3. Fixed Term Exclusions of 5.5 Days or less in Secondary Schools**



**Figure 4. Fixed Term Exclusions of 6 Days and Over in Secondary Schools**

4.6 Although Caerphilly has shown considerable improvement, it should be recognised that there has been widespread improvement throughout Wales. Therefore Caerphilly’s improvement has not been reflected in the ‘League Table’. Nevertheless, the improvement has demonstrated the continued commitment to reduce all exclusions in secondary schools in Caerphilly.

4.7 Schools and the Local Authority Support Services continue to try to reduce exclusion using a number of alternative education strategies to prevent or avoid exclusion, but there will continue to be occasions when schools find it unavoidable to exclude and it is unlikely that Caerphilly will experience zero exclusion.

The mechanisms now in place support schools in trying to reduce exclusions with the emphasis on meeting the identified needs of all children and young people. With regard to the School Improvement Agenda, staff within Learning, Education and Inclusion will continue to work closely with schools and other educational settings in order to raise standards and reduce exclusions.

**5. FINANCIAL IMPLICATIONS**

5.1 There are no financial implications.

**6. PERSONNEL IMPLICATIONS**

6.1 There are no personnel implications.

## **7. CONSULTATIONS**

7.1 No consultation was necessary in the preparation of this report.

## **8. RECOMMENDATIONS**

8.1 Committee members are requested to note the contents of this report.

## **9. REASONS FOR THE RECOMMENDATIONS**

9.1 This report has been prepared in response to a request from the Community Council Liaison Committee.

## **10. STATUTORY POWER**

10.1 This report does not require the application of statutory powers.

Author: Jackie Garland, Service Manager – Social Inclusion  
E-mail: [garlaj@caerphilly.gov.uk](mailto:garlaj@caerphilly.gov.uk)